

Chilled Water Meter Kit For Communal Systems

The Evinox chilled water meter kit includes all the equipment required to facilitate commissioning and balancing, and flow control of the chilled water circuit, as well as the accurate measurement of energy consumption.

The MID approved meter can be wired directly back to the ModuSat® HIU or MIB systems and integrate into our SmartTalk® Two-way Communication system. Chilled water consumption can be read from the ViewSmart room controller when connected to a ModuSat® HIU.

The integrated flushing by-pass enables the chilled water primary circuit to be cleansed and flushed. Simply close the isolation valves and open the flushing bypass and the apartment circuit, the energy shut-off valve and meter are protected from the cleansing process of the primaries.

The flushing bypass kit includes binder points for the commissioning engineer to use when required and the inbuilt isolation valve has an integral strainer.

The whole assembly comes complete with its own sturdy insulation extruded polyethylene (XPE) enclosure, which allows removal for any maintenance that may be required.

The chilled water meter kit is available in two sizes.

| Connections | G3/4" | G1" |
|---|-----------------|-------------|
| Evinox Energy Meter | RC-15 | RC-20 |
| Heat Meter Nominal Flow* kg/h | 1500 | 2500 |
| Shut-off Valve Actuator Electrical Connection | 230V AC 50/60Hz | |
| Energy Meter Protocol | ModBUS | |
| XPE Insulation Thermal Conductivity W/m | 0.038 | |
| Insulation Enclosure Dimensions mm | 495x290x150 | 555x320x150 |

*Chilled water flow rate should not be greater than specified nominal flow rate under typical operation.

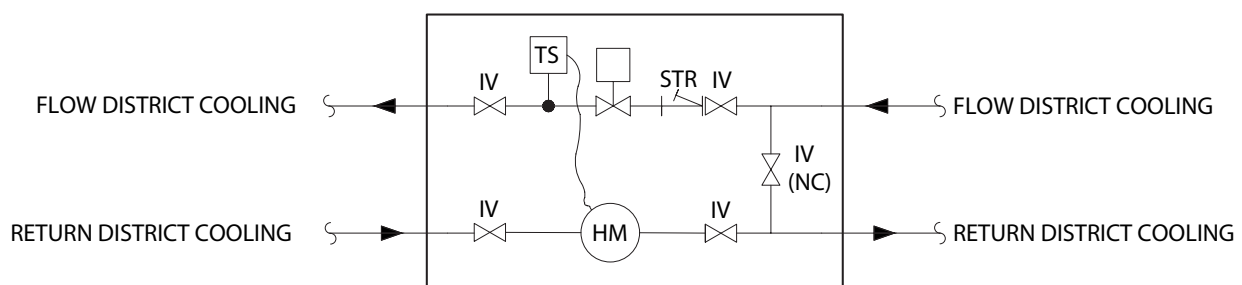
Please note: Straight pipe length before the heat meter inlet should not be less than 10 times the pipe diameter length.

Note on European Measuring Instruments Directive 2004/22/EC






In accordance with directive, when the energy meter is used for utility measurement purposes, the fitted energy meter display must be accessible without tools to the consumer.

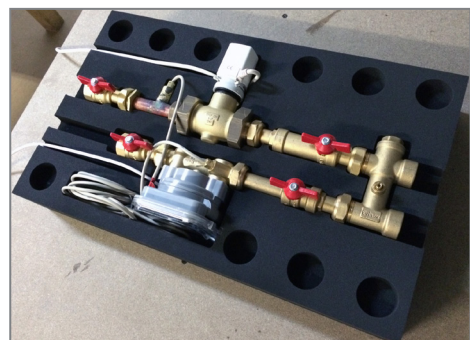
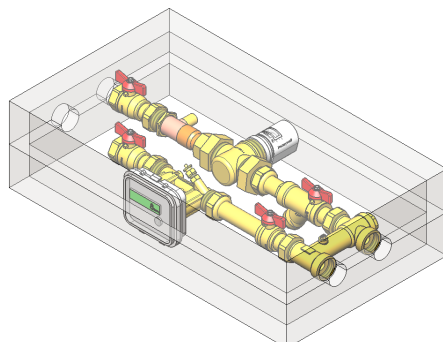
Evinox energy meters are available with the following displays:-

- Fixed to energy meter body; or
- Connected to energy body by 1.5m cable.



LEGEND

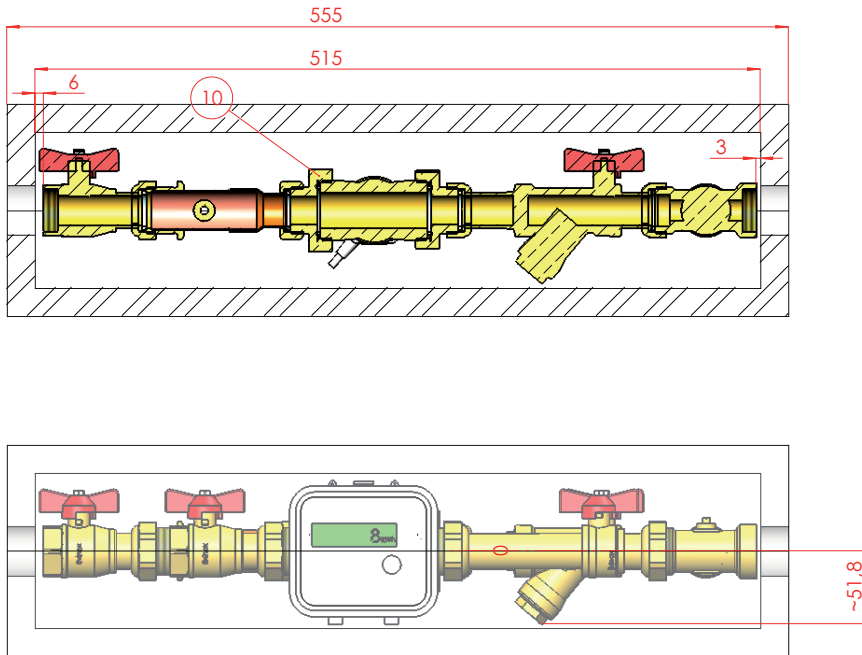
-  ISOLATION VALVE
-  STRAINER
-  TEMPERATURE SENSOR
-  HEAT METER
-  ENERGY SHUT-OFF VALVE



Dimensions

Chilled Water Meter Kit For Communal Systems

Chilled Water Meter Kit G1"



Chilled Water Meter Kit G3/4"

